

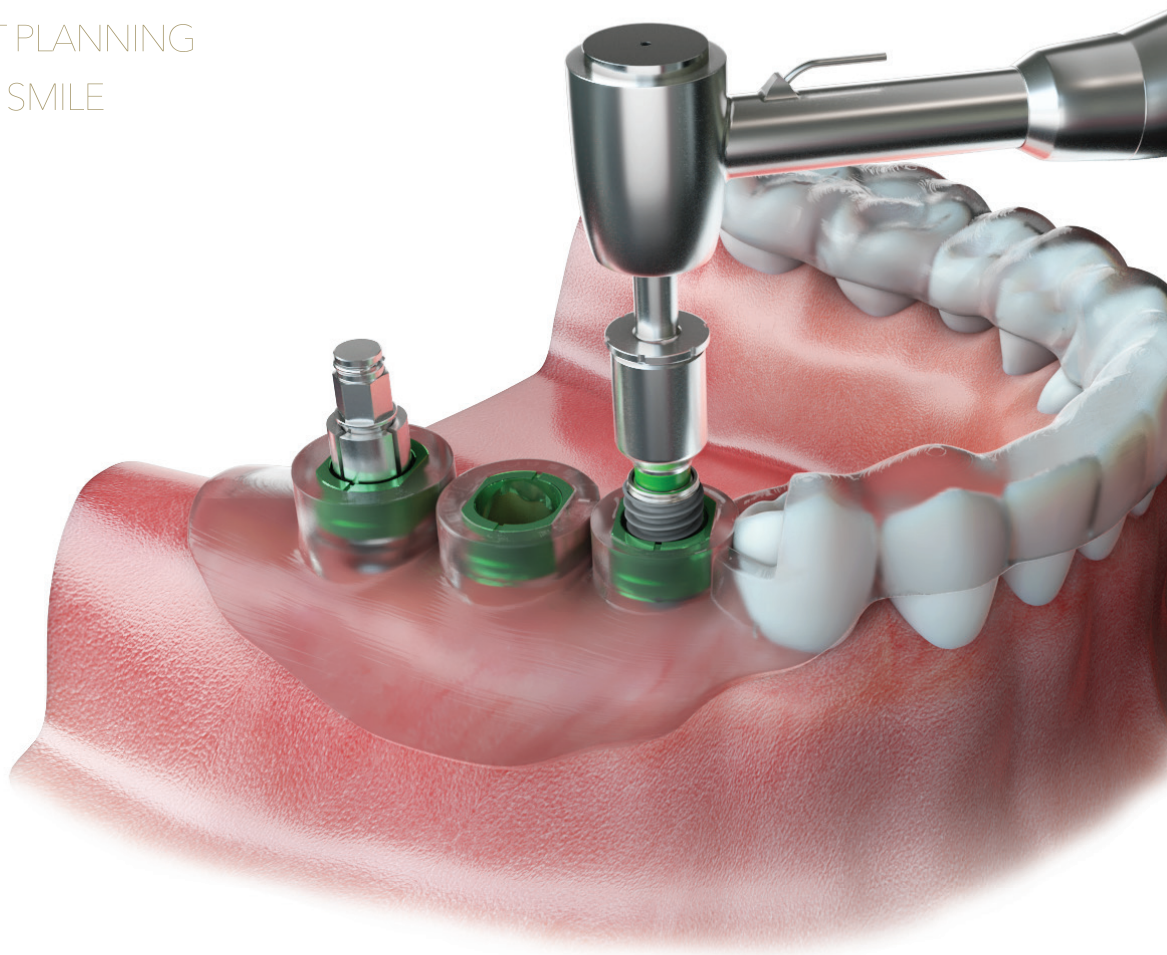
neo NAVIGuide

2022.08 E Ver.01



Find Neobiotech online

PERFECT IMPLANT PLANNING
FOR BRIGHT SMILE



Neo NaviGuide System

Implant Surgery becomes easier, better and faster
with the Neo NaviGuide

1

Accuracy

More predictable implant placement can be done as the implantologist's treatment plan becomes a clinical reality with Neo NaviGuide.

2

Saving Time

Neo NaviGuide was produced by predicting the implant position in advance, which can reduce the surgical time.

3

Convenience

Through the dedicated web site, simple order process, fast fabrication through expert and delivery service to use conveniently.

4

Reasonable Price

Economical and reasonable prices are offered.

5

**Positive implant
experience for
patients**

Patient who has experienced safe and pain-less digitized implant surgery will make a positive decision when he needs to decide for another implant surgery.

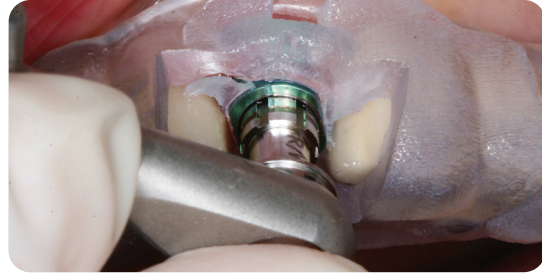
Why Neo NaviGuide?

Minimally Invasive Surgery



Flapless surgery allows for fast recovery with less swelling and bleeding.

Advanced surgical aids device



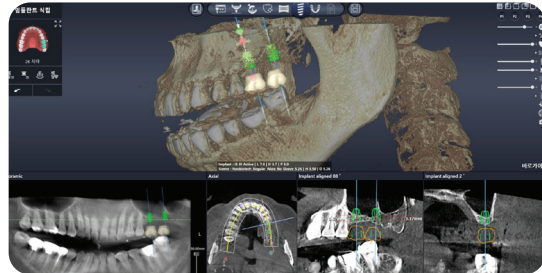
Prediction of the implant position and surgery without incision using surgical aids.

Fast surgery, Fast recovery



Flapless surgery can reduce the operating time and shorten the total treatment period through faster recovery.

3D computer simulated surgery

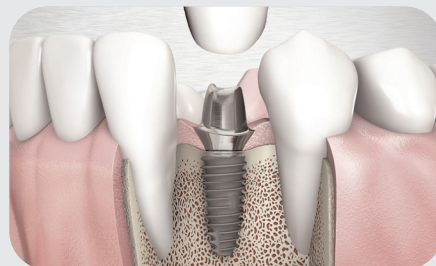


By identifying the location of the alveolar bone and nerves before surgery, to plan and to simulate safe implant placement.

Anytime Loading

Neo NaviGuide is a digital-based implant solution that aids implantologists in achieving the best implant treatment.

The CMI Fixation concept of Neobiotech implants enables anytime loading as well as immediate loading to provide the most satisfactory treatment for both patient and implantologist.



Neo NaviGuide **Process**

The digital-based workflow of the Neo NaviGuide solution enables faster and more convenient communication and reduces the burden on the implantologist at a reasonable cost.

CBCT Scans / Surface Scans



Dental
Clinic



Implant placement with the
Neo NaviGuide

Implant Planning by the
implantologist and technicians



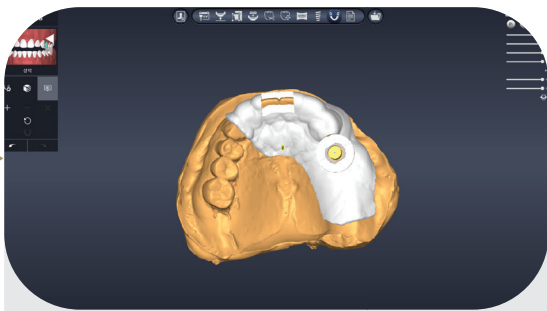
Implant Planning
Confirmation by the Dentist

Sending
data

Delivery



Neo NaviGuide Design



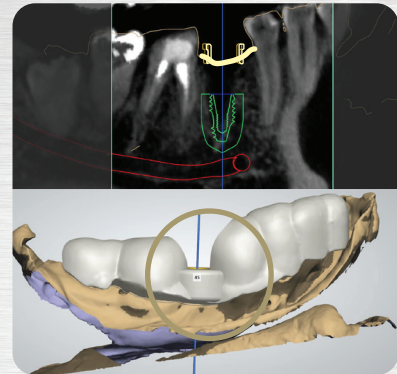
Neo NaviGuide Center



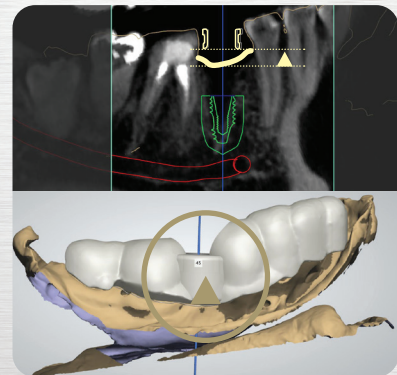
Fabrication of the
NeoNaviGuide

Offset Design

Teeth interference or gingival height related problems can be solved by increasing the height of the sleeve up to 3mm.
9mm, 10.5mm, 12mm Offset

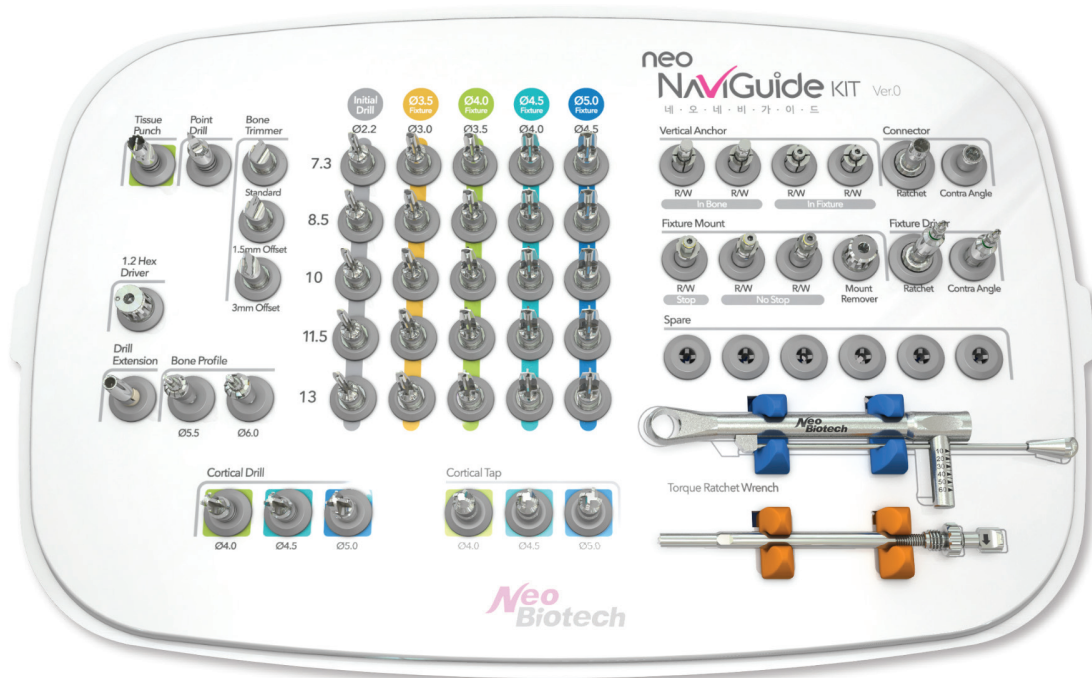


Sleeve Offset : 9mm



Sleeve Offset : 12mm

Neo NaviGuide Kit



Neo NaviGuide Kit R/W ver.0


| Compatible Fixture IS Type Ø4.0~Ø5.0 Implant


	Ø4.0	Ø4.5	Ø5.0
7.3mm	0	0	0
8.5mm	0	0	0
10mm	0	0	0
11.5mm	0	0	0
13mm	0	0	0

06/07

Neo NaviGuide Kit Components


Neo NaviGuide Kit R/W ver.0


Tissue punch	Size	Product name
	4.3 / Regular	NGTP43R


Bone Trimmer	Size	Product name
	OffSet 0	NGBT00
	OffSet 1.5	NGBT15
	OffSet 3	NGBT30

Point Drill	Size	Product name
	Ø2.2	NGPD22

2.2 Initial Taper Drill	Size	Product name
		NGTWD2207
		NGTWD2208
	Ø2.2	NGTWD2210
		NGTWD2211
		NGTWD2213

Taper Drill	Size	Product name
		NGTD3007
		NGTD3008
	Ø3.0	NGTD3010
		NGTD3011
		NGTD3013




Taper Drill	Size	Product name
		NGTD3507
		NGTD3508
	Ø3.5	NGTD3510
		NGTD3511
		NGTD3513




Taper Drill	Size	Product name
		NGTD4007
		NGTD4008
	Ø4.0	NGTD4010
		NGTD4011
		NGTD4013

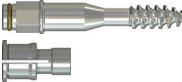
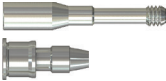
Neo NaviGuide Kit Components



Neo NaviGuide Kit R/W ver.0



Taper Drill	Size	Product name
		NGTD4507
		NGTD4508
	Ø4.5	NGTD4510
		NGTD4511
		NGTD4513



Cortical Tap (ISII)	Type	Size	Product name
		F4.0 (W)	NGISCT40R
	0.8Pitch	F4.5 (W)	NGISCT45R
		F5.0 (W)	NGISCT50W



Cortical Tap (ISIII)	Type	Size	Product name
		F4.0 (W)	NGISCT40RS
	0.9Pitch	F4.5 (W)	NGISCT45RS
		F5.0 (W)	NGISCT50WS

Vertical Anchor	Type	Product name
	in Bone	SGVABRW
	in Fixture	SGISVAFRW

Fixture Mount	Type	Product name
	Regular/Wide	SGISFARW
	Regular/Wide	SGISFARW30


Fixture Driver	Type	Product name
	Ratchet	NGISFDR
	Contra Angle	NGISFDCA

Connector	Type	Product name
	Contra Angle	SGCAC00
	Ratchet (10.5mm)	SGRC10

Bone Profile	Type	Product name
	Ø5.5	ISBP55
	Ø6.0	ISBP60

Torque Ratchet	Product name
	TW60

1.2 Hex driver	Product name
	HD1215S

Mount Remover	Product name
	SGFART20

Drill Extension	Product name
	DE01

Neo NaviGuide Kit



Neo NaviGuide Kit Narrow ver.0



Compatible Fixture IS Type Ø3.5 Implant

	Ø3.5	Ø4.0	Ø4.5	Ø5.0
7.3mm	0	-	-	-
8.5mm	0	-	-	-
10mm	0	-	-	-
11.5mm	0	-	-	-
13mm	0	-	-	-

Neo NaviGuide Kit Components

Neo NaviGuide Kit Narrow ver.0

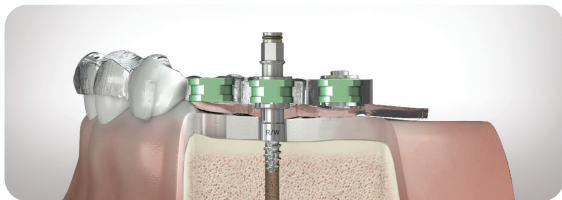
Point Drill	Size	Product name
	Ø2.2	NGPD22N
2.2 Initial Taper Drill	Size	Product name
		NGTWD2208N
		NGTWD2210N
		NGTWD2211N
	Ø2.2	NGTWD2213N
		NGTWD2214N
Taper Drill	Size	Product name
		NGTD3008N
		NGTD3010N
		Ø3.0 NGTD3011N
		NGTD3013N
		NGTD3014N
Cortical Tap	Type	Product name
	0.8Pitch	NGISCT35N
Cortical Tap	Type	Product name
	0.9Pitch	NGISCT35NS

Fixture Mount	Type	Product name
	Narrow	SGISFAN
		SGISFAN30
Fixture Driver	Type	Product name
	Ratchet	NGISFDRN
	Contra Angle	NGISFDCAN

Neo NaviGuide Drilling Sequence

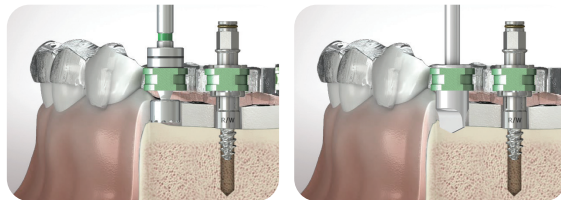
Step
1

Fix the Guide using the Vertical Anchoring Tool.



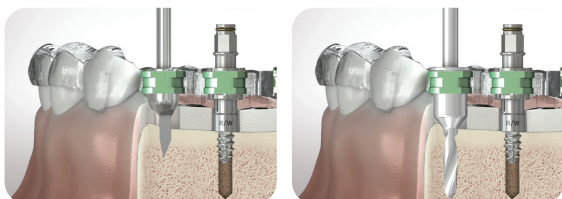
Step
2

Remove the soft tissues using Tissue punch and flatten the bone level by removing crestal bone.



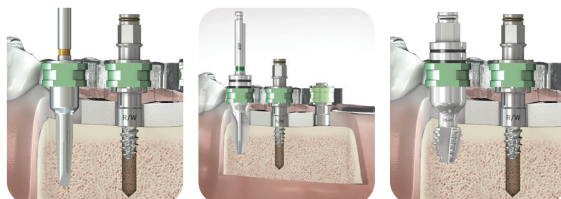
Step
3

Accurate drilling is performed using the initial drill at the implant placement location.



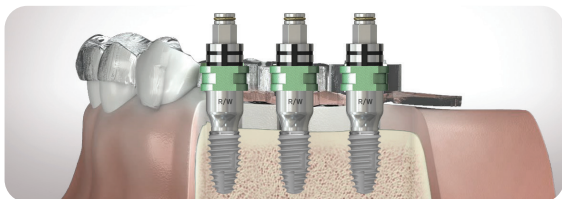
Step
4

Secure the space for the implant to be placed using a Stop drill, Countersink drill, and Profile Tap Drill.



Step
5

Insert the implant using Implant Connector, Fixture Driver, Fixture Mount.



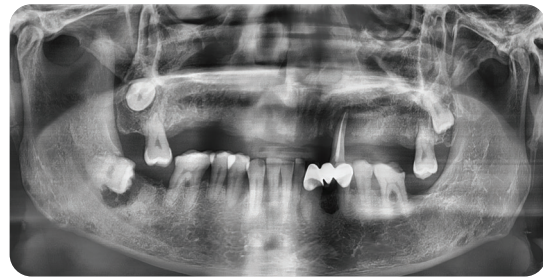
Neo NaviGuide **Clinical Case**

| **Case 1** Challenges of a Beginner Implantologist.

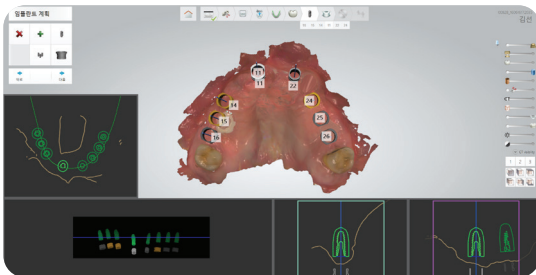
Pre-OP



Pre-OP



Implant Planning



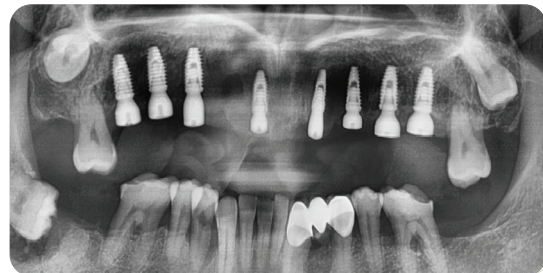
Placing the surgical guide in the mouth



Implant placement



Post-OP



Neo NaviGuide Clinical Case

Case 2 Immediate loading applied to the immediately placed implant after extraction on the anterior site.

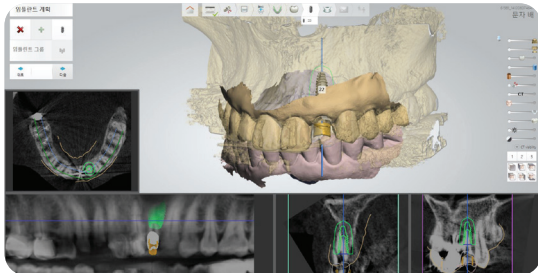
Pre-OP



#22 Extraction



Implant Planning



Implant Placement



Immediate Loading



Immediate Loading



Case 3 Immediately placed implant on the Maxillary.

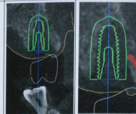


Pre-OP



Pre-OP



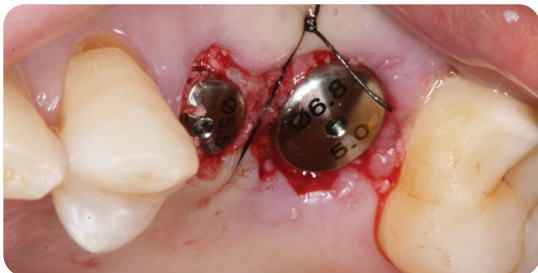
Implant Planning

Implant position (F0)	25	26
Diameter (mm)	4.5	5.0
Length (mm)	11	11
Order number	BIS4511A	BIS5011A
Cross View		
	#25 Bone Graft on the Buccal	#26 Bone Graft on the Buccal & Palatal
Panorama		

Drilling with NeoNaviGuide R/W Kit



Implant Placement



Post-OP





www.neobiotech.com

Neobiotech Co., Ltd. E-space #1001, 36, Digital-ro 27-gil,
Guro-gu, Seoul, Korea, 08381 Tel. +82-2-582-2885 Fax. +82-2-582-2883