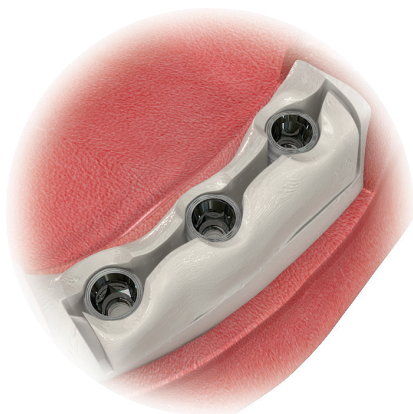


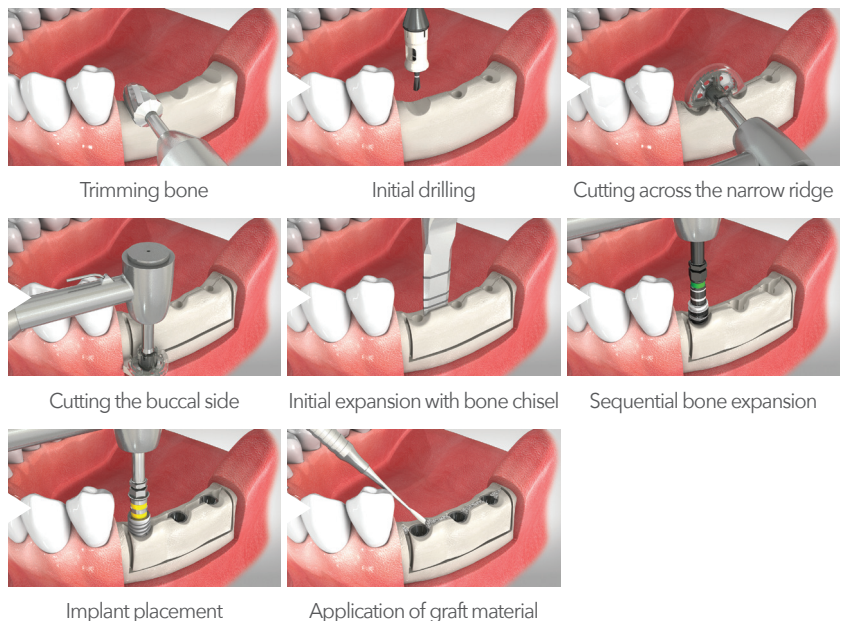
# Ridge Wider Kit



The ultimate ridge splitting solution in narrow alveolar ridge.



The Safe Disk and Bone Expander from the Ridge Wider Kit enable safe and effective horizontal expansion and simultaneous implant placement in narrow ridges.



## Ridge Wider Kit



Product No. RWKITV00

### 1. Bone Trimmer

Used to flatten and smooth out the narrow alveolar crest

- Side blades enable quick trimming of the alveolar crest
- 1,200rpm



Product No. BTRI6010

### 2. Ø1.5 Initial Drill

Used for initial drilling before bone expansion

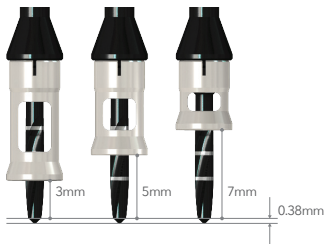
- Initial drilling marks implant positioning and acts as a guide hole prior to using the Safe Disk or Bone Expander
- 1,200rpm



Product No. SDF15

### 3. Stopper

Stoppers for the Ø1.5 Initial Drill



Product No.	SFDS030 (3mm)
	SFDS050 (5mm)
	SFDS070 (7mm)

### 4. Safe Disk (Non-Saw Type / Saw Type)

Used for cutting across the narrow ridge



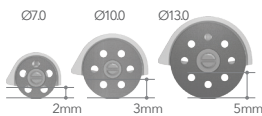
#### Non-Saw Type

- Disk-type blade for maximum safety
- Improved cutting performance through diamond powder coating
- 1,200rpm



#### Saw Type (Optional)

- Saw-type blade with greater cutting performance (for experienced users)
- Improved cutting performance through diamond powder coating
- 1,200rpm



### 5. Bone Chisel

Used for initial ridge expansion

- Slight expansion of the ridge through inserting the Chisel between the cortical plates
- Additionally separates the attached remaining bone
- 3 / 5 / 7mm

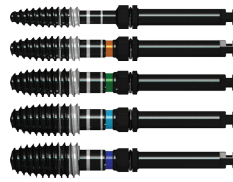


Product No. BCHI60

### 6. Bone Expander

Used for sequential bone expansion

- Gradual bone expansion of the initially drilled receptor site
- Corresponds to implant diameter
- 25~35rpm



Product No.	BEXP30
	BEXP35
	BEXP40
	BEXP45
	BEXP50

### 7. Torque Ratchet

Ratchet for Bone Expander



Product No. TW60

### 8. Ratchet Connector

Connects Torque Ratchet and Bone Expander



Product No. RC10



Ø7.0mm, T0.35mm	Ø10.0mm, T0.35mm	Ø13.0mm, T0.35mm	✓Ø7.0mm, T1.0mm
SAWD0703N	SAWD0710N	SAWD1003N	SAWD1303N



Ø7.0mm, T0.35mm	Ø10.0mm, T0.35mm	Ø13.0mm, T0.35mm	✓Ø7.0mm, T1.0mm
SAWD0703S	SAWD0710S	SAWD1003S	SAWD1303S

✓ Ø7.0mm, T1.0mm Safe Disk is used before alveolar bone expansion.

- Prevent alveolar bone fracture by cutting the lower part of the buccal area by 1mm thickness before bone expansion