



Treating Periimplantitis  
**R-Brush**



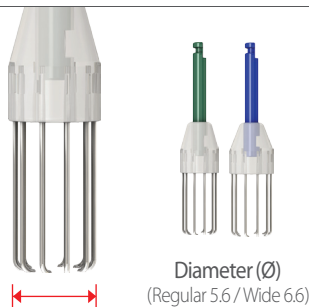
# Easily Remove the Infected Implant Surface with Round Brush

Precise Cleansing for Peri-implantitis Treatment

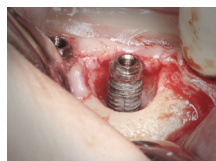
## R-Brush

R-Brush, a disposable implant round brush, is the most absolute solution for periimplantitis. This periimplantitis treatment tool is designed to remove the infected implant surface to reduce bone loss process. R-Brush composed of titanium alloy bristles rotates around a fixture to remove inflammation and at the same time, forms new rough surface that allows better re-osseointegration.

2,000-5,000 RPM with irrigation (1:1)



## How to Use



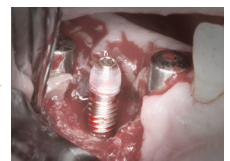
Bone loss has occurred.



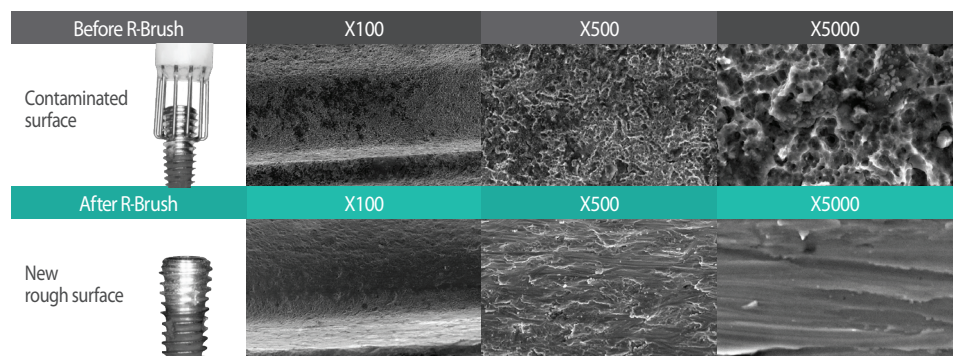
After removing prosthesis and abutment, connect cover cap to the fixture.



Along the exposed implant surface, cleanse with vertically reciprocating motion.



Use iBrush where R-Brush cannot be approached and suture after conducting GBR.



After treating periimplantitis with R-Brush, new rough surface is formed that will allow better re-osseointegration.