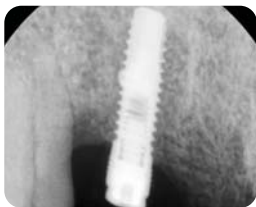




# Brush

patent



2mm



## New Cleaner for implant !!

- ✓ Easy to use (No incision, Fast surgery)
- ✓ Perfect cleansing of the infected Implant surface
- ✓ Rough Surface is preserved even after the use of I-Brush
- ✓ Prevent bone loss
- ✓ Facilitate new bone regeneration
- ✓ Decrease failure rate

1Box (1ea x 10)

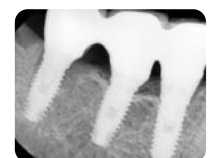


### Clinical Case 1. Surgical treatment (3 Unit Bridge)



Bleeding, bone loss and infection on the #47 fixture. Proceed probing after removal of the prosthesis. Deep pocket visible.

Removed infected tissues. With 1,000 ~ 2,000 rpm, use I-Brush after gingival incision. Cleanse with irrigation.



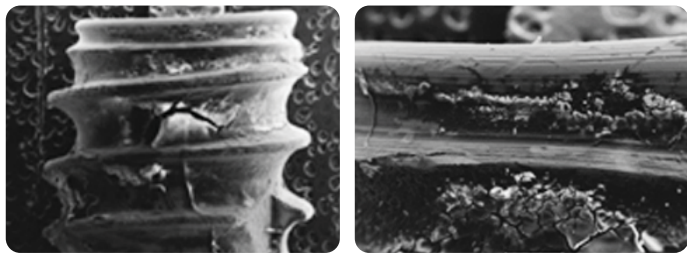
Utilize ACM to collect bones for damaged portions then proceed suture.

After procedure

After healing

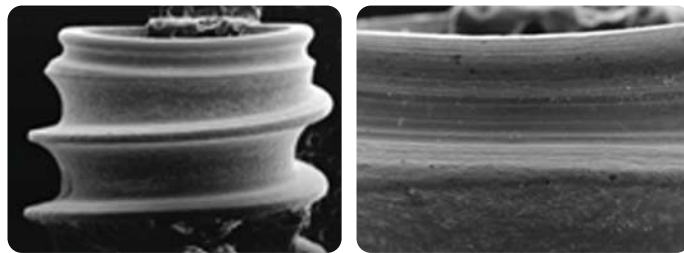
X-ray after 2 weeks

## Before I-Brush



Periimplantitis on animal.  
Contamination and infection on the S.L.A. surface.

## After I-Brush



3 minutes of I-Brush cleansing without open flap.  
No contamination nor infection could be found on the surface.  
Without any scratch, the rough surface of the implant is clearly preserved.

## Use for and Instruction ● ● ● ● ●

	Non-Surgical treatment	Surgical treatment
<b>Indication</b>	1. Less than 2mm of vertical bone loss.	1. More than 2mm of vertical bone loss around implant.
<b>Instruction</b>	<ol style="list-style-type: none"> <li>1. Proceed local anesthesia.</li> <li>2. Detach gingival sealing around the implant by using Explorer or Curett.</li> <li>3. Insert I-Brush into the gingival with 1,000 ~ 2,000 rpm with irrigation.</li> <li>4. Cleanse the gingival with saline.</li> </ol>	<ol style="list-style-type: none"> <li>1. Proceed local anesthesia.</li> <li>2. If possible, remove the prosthesis then proceed with incision and flap opening.</li> <li>3. Brush with 1,000 ~ 2,000 rpm with irrigation. (Use saline)</li> <li>4. Finalize with GBR or Suture.</li> </ol>
<b>Caution</b>	Sterilize with EO gas before use. (This medical instrument is for single use. Re-use is prohibited. Discard after use.)	

### Clinical Case 2, Non-surgical treatment



Severe infection occurred on implants at bilateral mandibular.



Non-surgical treatment with I-Brush.



2 weeks after treatment.

### Clinical case 3, Non-surgical treatment.

