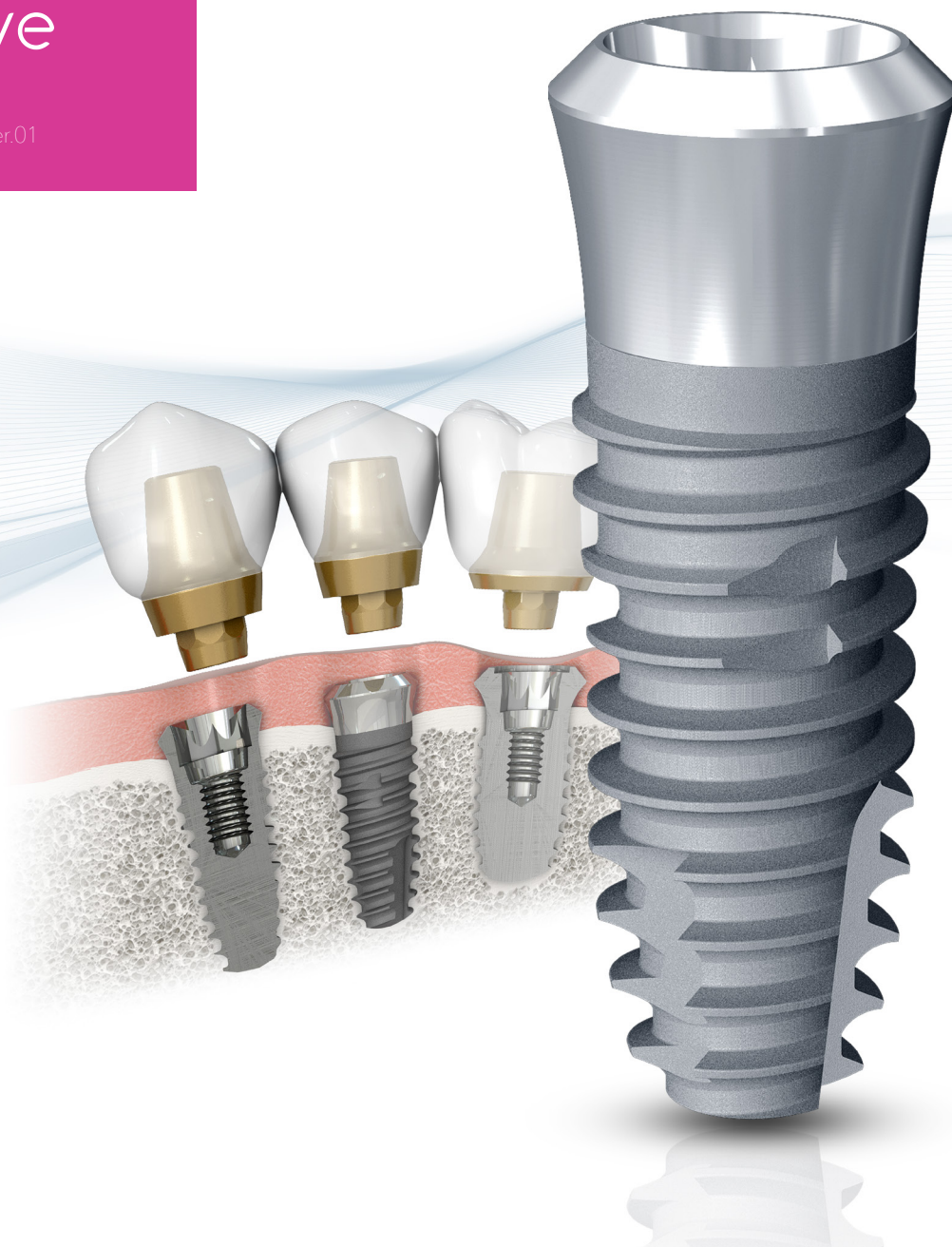


IT-III active

2019.03 E Ver.01

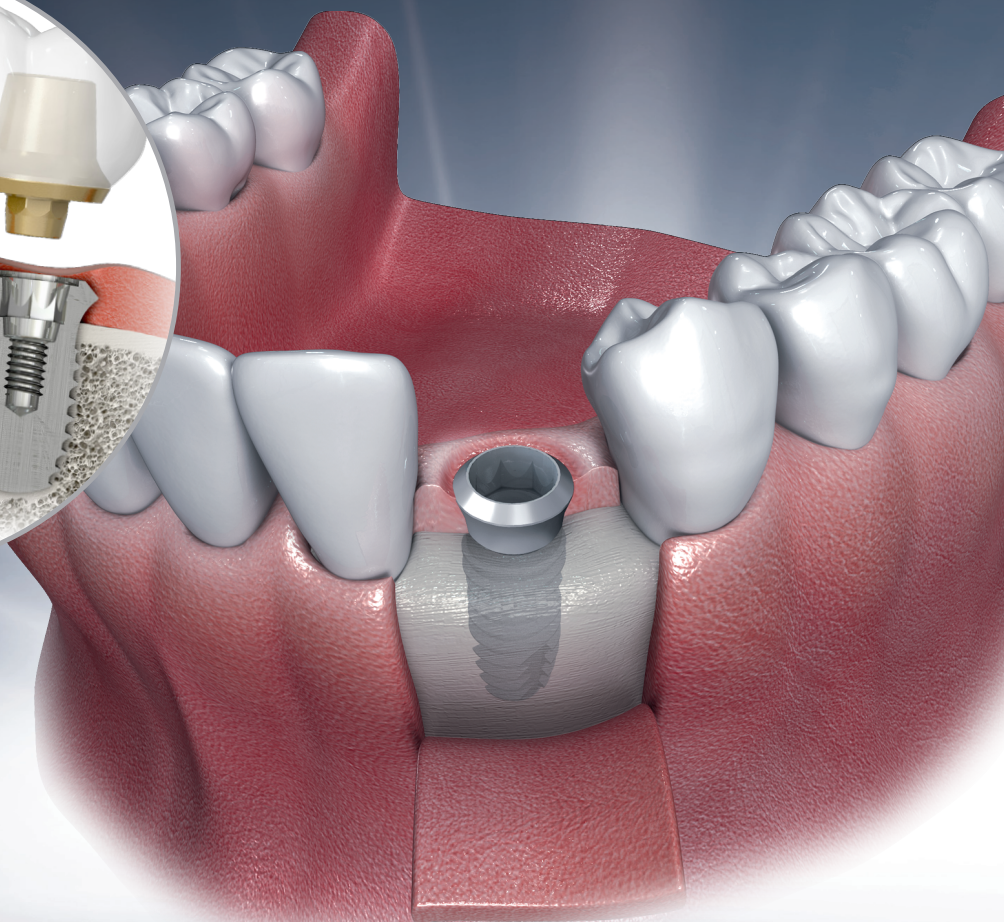
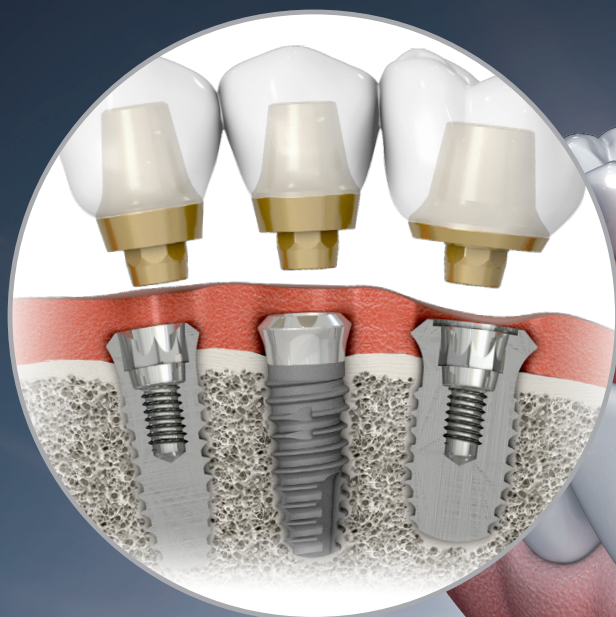


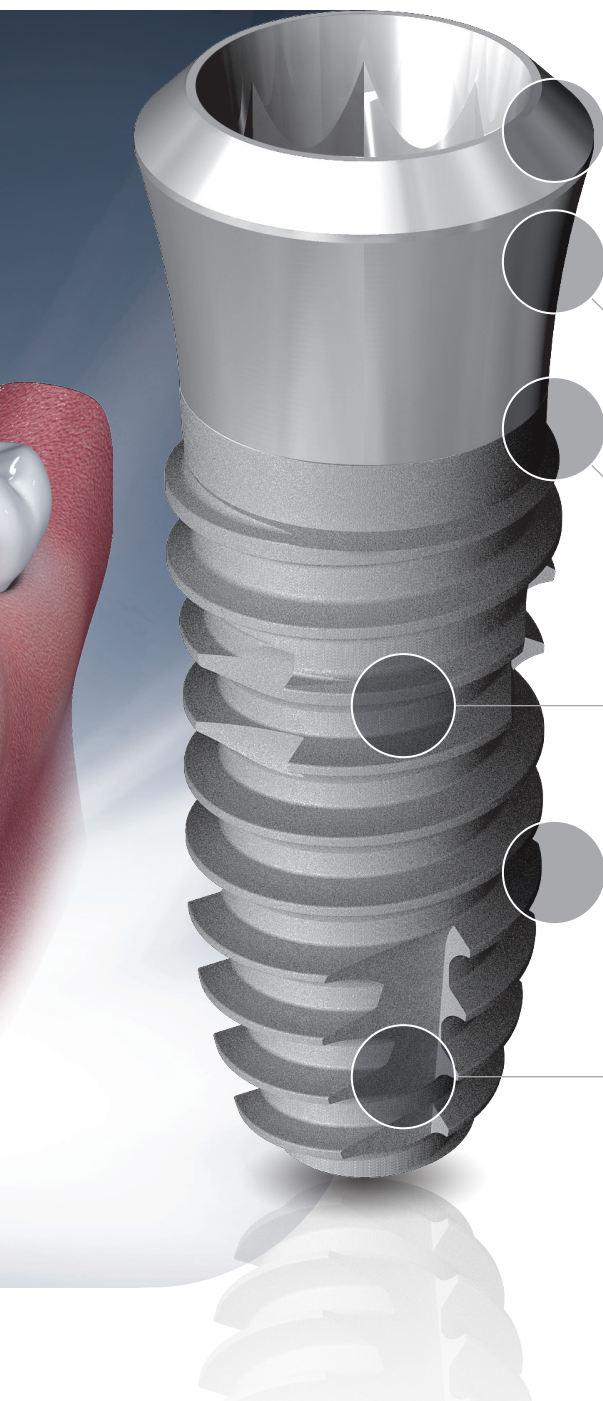
Find Neobiotech online



WHY IT-III active?

IT-III active, an internal non-submerged type and tissue level implant product, simplifies implantation depth control. S.L.A. surface of IT-III active minimizes osseointegration period and its smooth body design maximizes initial stability for prosthetic loading, or AnyTime Loading.





3.1 Octa 8° Morse Taper

- Compatible with previous IT System
- Regular Neck / Wide Neck

1.8 / 2.8 G.Collar

- Applicable to various oral conditions with dual Gingiva Collar type

Straight Neck

- Easy to control implantation depth
- Reduce the risk of fracture

S.L.A. Surface

- More S.L.A. surface site than previous version

Deep & Wide Pitch

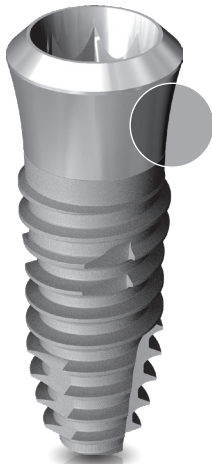
- Increased bone-implant contact
- Increased osseointegration conditions

Wide Cutting Edge

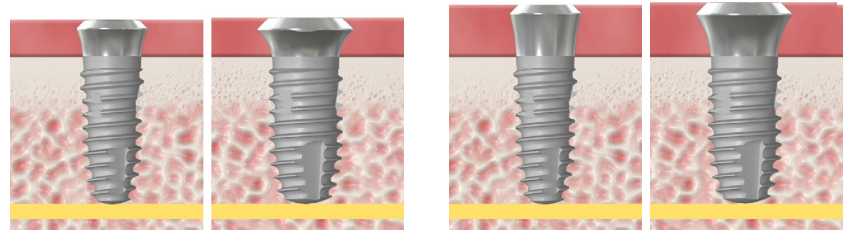
- Increased sense of implantation
- Improved initial stability

IT-III active Features

1 Dual Gingiva Collar Type



Applicable to various gingival height
with dual gingiva collar type, 1.8mm and 2.8mm



1.8G

2.8G

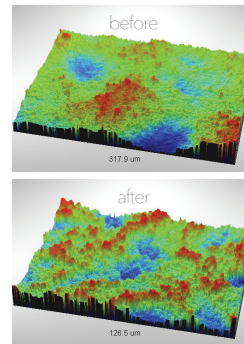
2 S.L.A. Surface



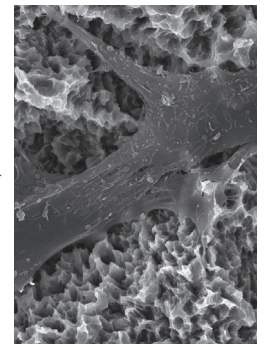
Reduced osseointegration period with
improved S.L.A. surface process technology



Improved S.L.A. Surface
Process Technology



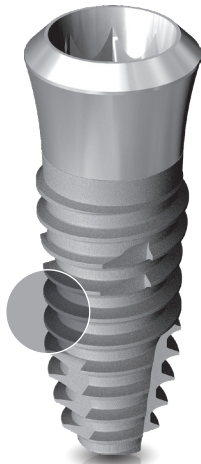
40% increased surface site



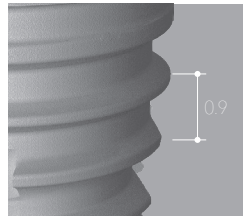
Reduced osseointegration period
(50% increased cell adhesion)

3

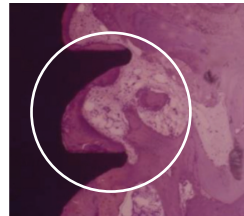
Deep & Wide Pitch



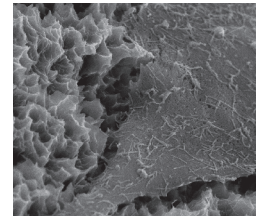
Increased stability and osseointegration rate
with enlarged contact area between thread pitch and bone



0.9 Pitch



Minimal bone compression
(Prevent bone necrosis)



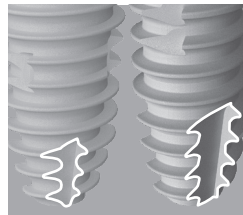
Optimized condition for
osseointegration

4

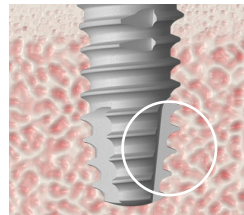
Wide Cutting Edge



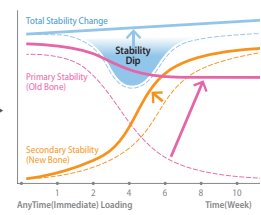
Improved stability and sense of implantation with doubled cutting edge



Doubled cutting edge
surface



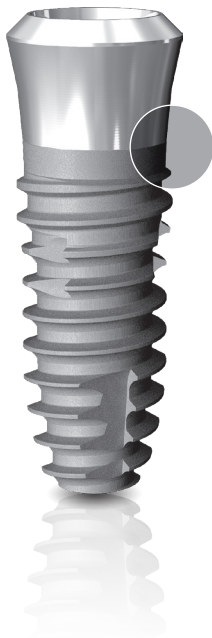
Improved self-tapping ability with
minimized bone compression



Maximized initial stability
(AnyTime Loading)

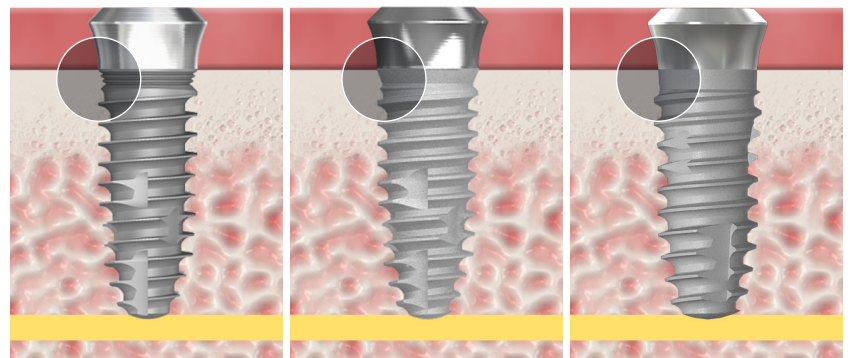
IT-III active Features

5 Straight Neck



A

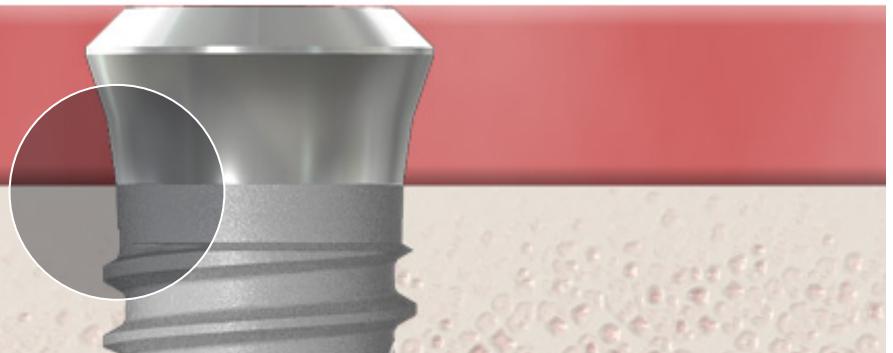
Improved neck design to ease implantation depth control, without being blocked by cortical bone



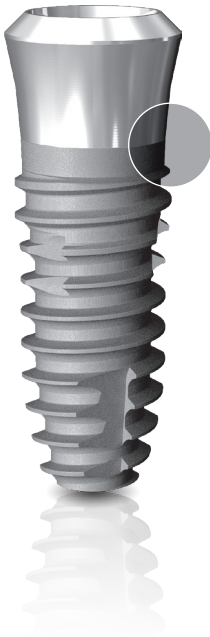
IT

IT-II

IT-III



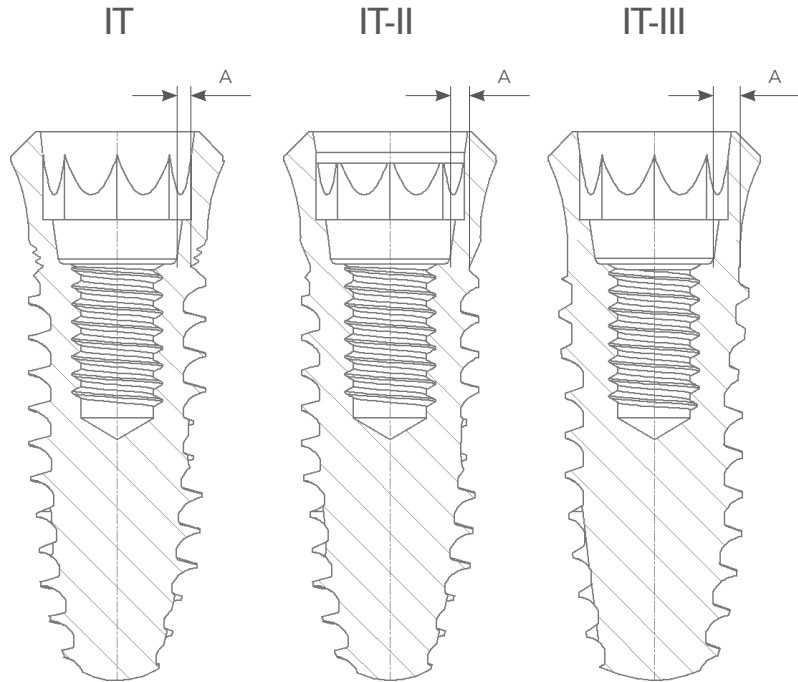
06/07



B

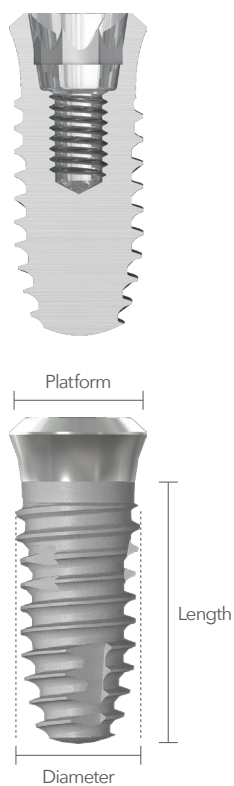
Prevent the risk of fracture with improved solidity of neck
(Over 30% thickened neck)

Diameter	A		
	IT	IT-II	IT-III
Ø3.5	0.183	0.305	0.531
Ø4.0	0.337	0.455	0.603



IT-III active Line Up

Regular Neck

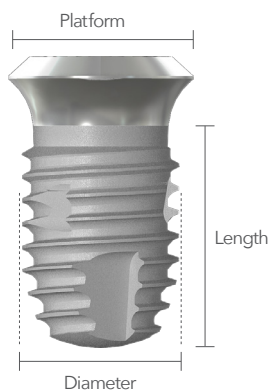
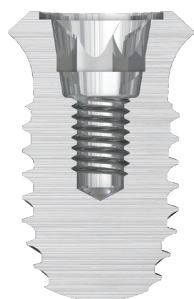


Diameter	Platform	G. Collar	Length (mm)				
			7.0	8.5	10.0	11.5	13.0
Ø3.5	Ø4.8	1.8					
		2.8					
Ø4.0	Ø4.8	1.8					
		2.8					
Ø4.5	Ø4.8	1.8					
		2.8					
Ø5.0	Ø4.8	1.8					
		2.8					

* Cover screw not included

08/09

Wide Neck



Diameter	Platform	G. Collar	Length (mm)				
			7.0	8.5	10.0	11.5	13.0
Ø5.0	Ø6.5						
		1.8	ITW315007AP	ITW315008AP	ITW315010AP	ITW315011AP	ITW315013AP
		2.8	ITW325007AP	ITW325008AP	ITW325010AP	ITW325011AP	ITW325013AP
Ø5.5	Ø6.5						
		1.8	ITW315507AP	ITW315508AP	ITW315510AP	ITW315511AP	ITW315513AP
		2.8	ITW325507AP	ITW325508AP	ITW325510AP	ITW325511AP	ITW325513AP
Ø6.0	Ø6.5						
		1.8	ITW316007AP	ITW316008AP	ITW316010AP	ITW316011AP	ITW316013AP
		2.8	ITW326007AP	ITW326008AP	ITW326010AP	ITW326011AP	ITW326013AP

* Cover screw not included

IT-III active Line Up

Cover Screw

Regular Neck



Product name ITCS10

Product name ITCS48

Wide Neck

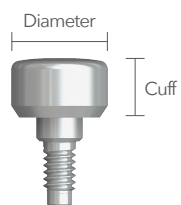


Product name ITCSW10

Product name ITCS65

Healing Abutment

Regular Neck



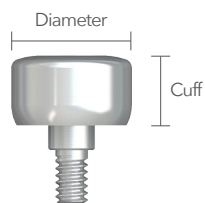
Diameter Ø5.8



Cuff(mm)	2.0	3.0	4.0
----------	-----	-----	-----

Product name	IUTH502	IUTH503	IUTH504
--------------	---------	---------	---------

Wide Neck



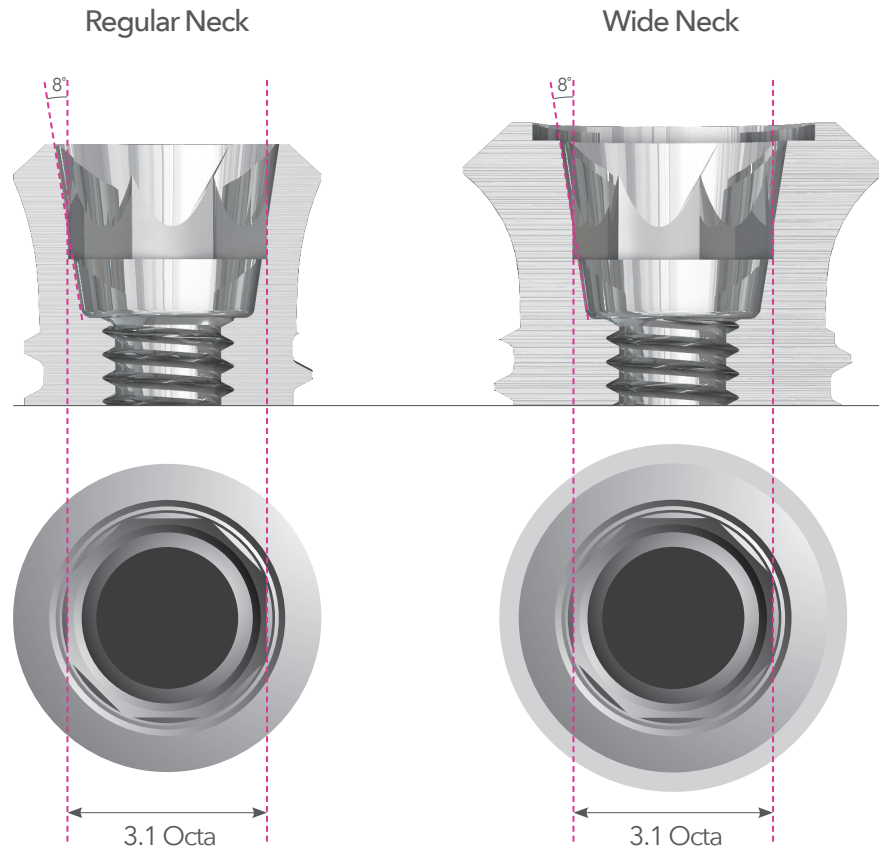
Diameter Ø7.2



Cuff(mm)	2.0	3.0	4.0
----------	-----	-----	-----

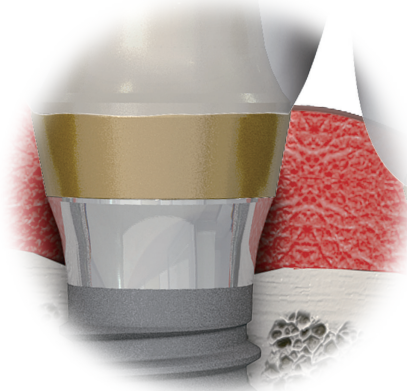
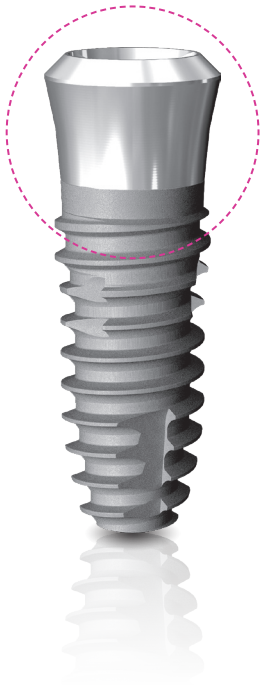
Product name	ITHW702	ITHW703	ITHW704
--------------	---------	---------	---------

IT-III active Prosthetic Connection



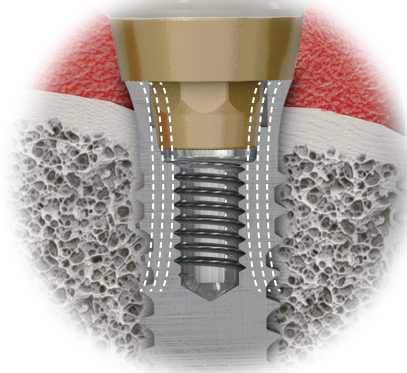
- Internal morse taper
- 8° Morse Taper
 - 3.1 Octagon

IT-III active Prosthetic Connection



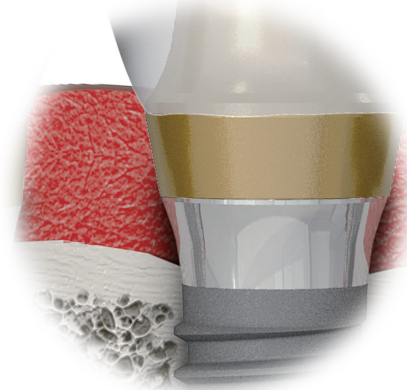
Respecting the biological distance

Smooth machined collar provides biological width to minimize bone resorption, and space for gingiva to develop



Biomechanical implant design

The tulip-shaped body and 45 degree shoulder design prevent bone micro-damage and bone resorption by a proper distribution weight loads



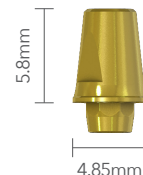
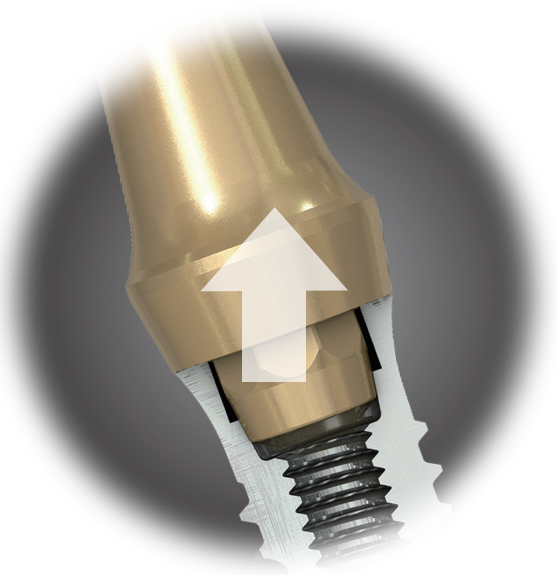
Optimal positioning of smooth and rough surface

The smooth collar provides flexibility on maintenance and adjustment of bone level and its height

IT SCRP® Abutment

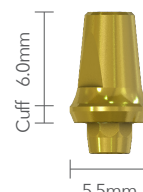
Cementable or Screw-retained abutment for single tooth and bridges

- Customizable by grinding (need to remain at least 3mm of abutment length above fixture platform)
- Abutment Screw (ITCS20S) included, Tightening Torque : 30Ncm
- Short octa design, Retrievable within 16° between implants

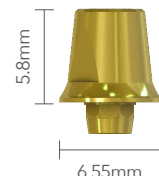


Regular Neck

Cuff(mm)	0
SCRP®	ICS500



Cuff(mm)	1	2	3	4
SCRP®	ICS510	ICS520	ICS530	ICS540



Wide Neck

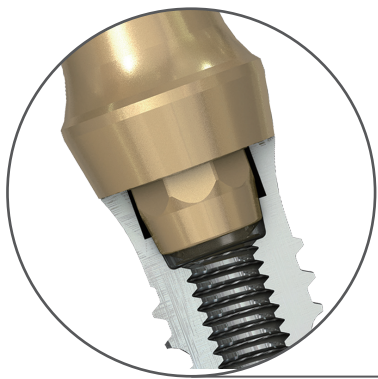
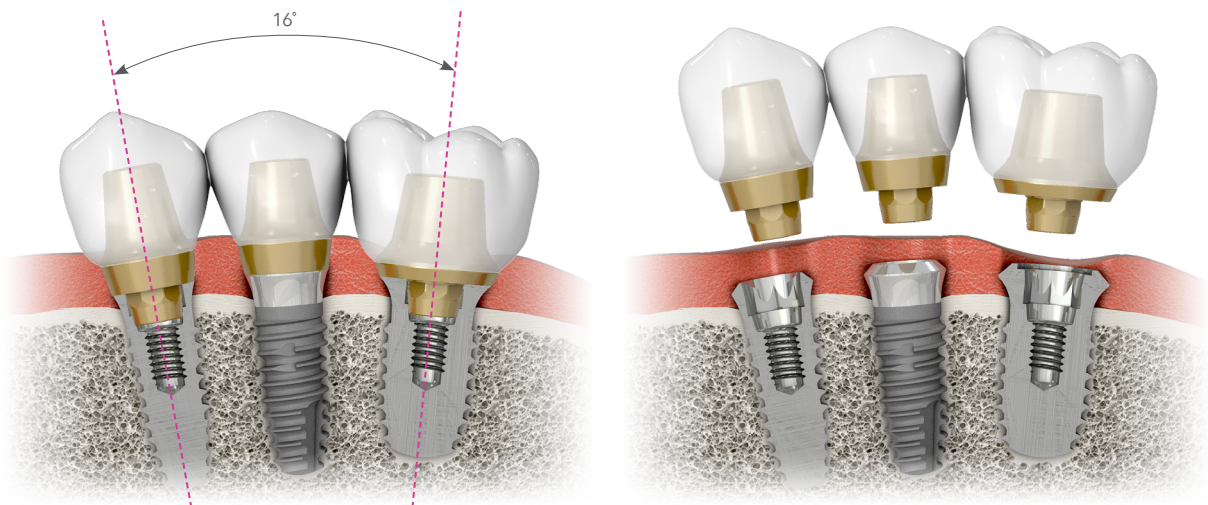
Cuff(mm)	0
SCRP®	ICSW700



Cuff(mm)	1	2	3	4
SCRP®	ICSW710	ICSW720	ICSW730	ICSW740

IT SCRP® Abutment

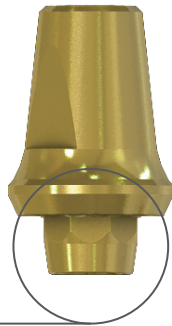
- IT System, internal non-submerged type implant, simplifies implantation depth control with its long neck. Abutment is connected on the fixture at top of the bone level, thus IT system eases removal of the abutment and residual cement.
- Semi-octa structure of SCRP Abutment simplifies both installation and removal of prosthetic within 16 degrees in multiple cases.



SCRP

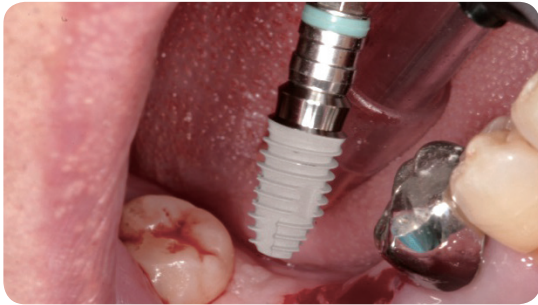
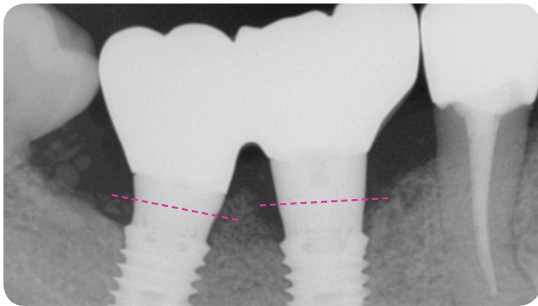
Octa

Non Octa



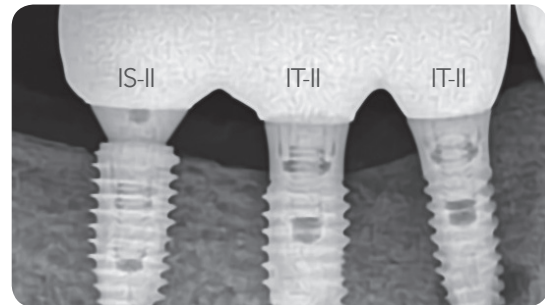
1. Dual collar heights

Prosthetic, bridge type, with different cuff sizes of IT SCRCP abutment with different bone level



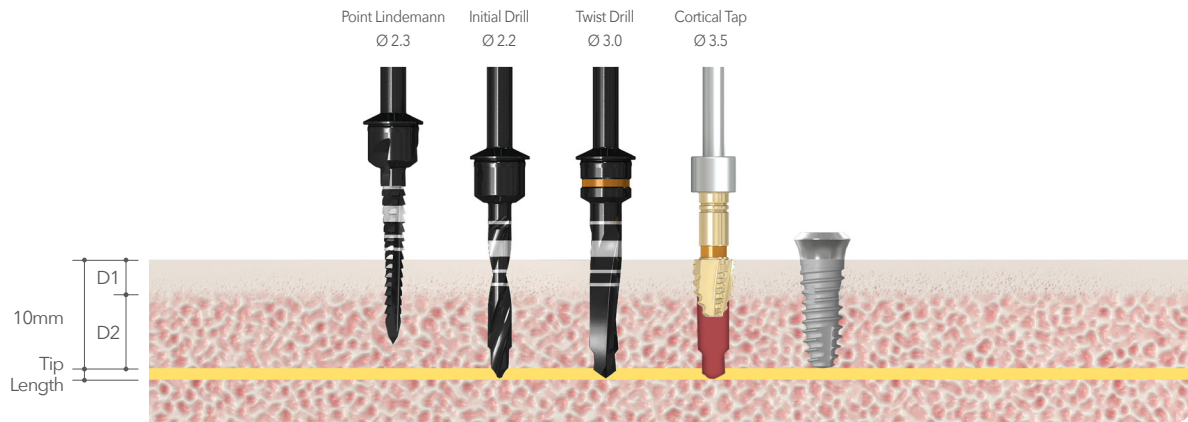
2. Splinting with different fixture type

Prosthetic with SCRCP abutment, bridge type, upon various types of fixtures, on different slopes of bone level



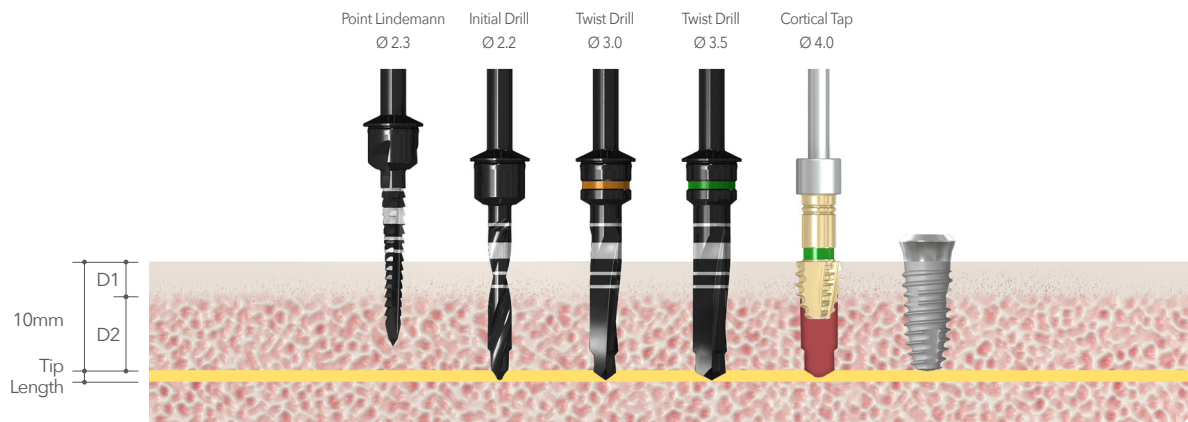
IT-III active Drilling Protocol

IT-III active Fixture $\text{Ø}3.5 \times 10\text{mm}$ (D1/D2 bone)



In soft(D4) bone, use $\text{Ø} 2.2$ initial drill as the final drill

IT-III active Fixture $\text{Ø}4.0 \times 10\text{mm}$ (D1/D2 bone)

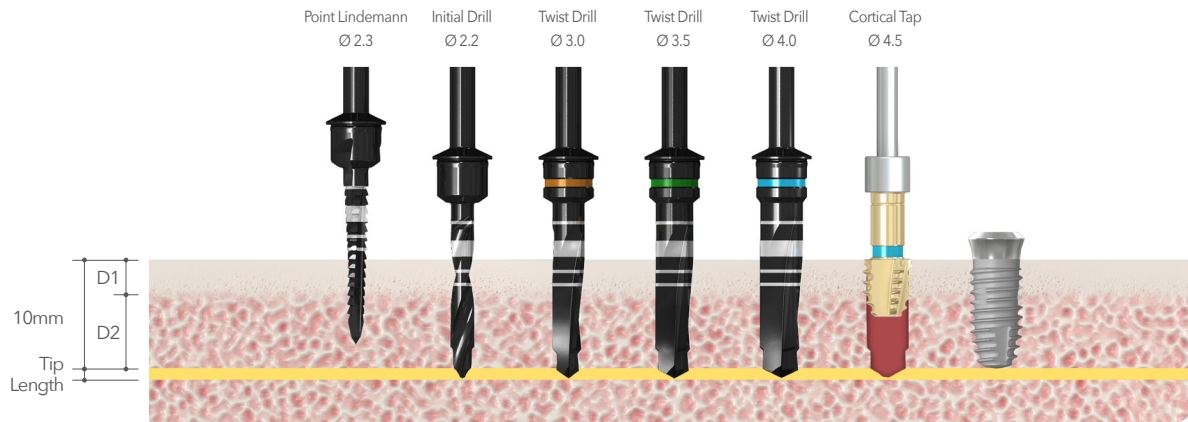


In soft(D4) bone or in condition of getting initial fixation at implant apex, $\text{Ø}3.0$ twist drill is the final drill

Drilling Speed & Torque

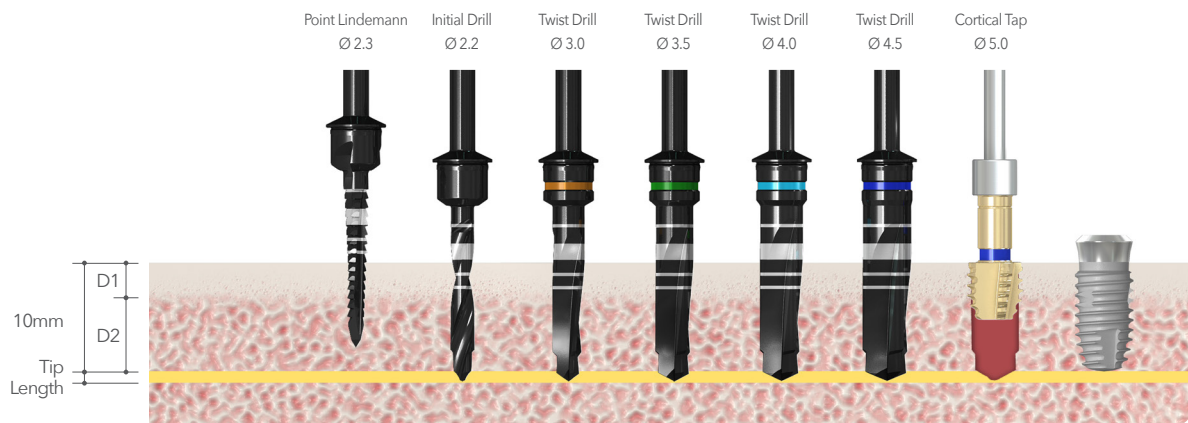
Point Lindemann, Initial Drill, Twist Drill : 1,200rpm / 35~45Ncm Cortical Tap : 50rpm / 50Ncm
Cortical Drill : 1200rpm / 50Ncm (Conventional Loading case)

IT-III active Fixture $\varnothing 4.5$ X 10mm (D1/D2 bone)



In soft(D4) bone or in condition of getting initial fixation at implant apex, $\varnothing 3.5$ twist drill is the final drill

IT-III active Fixture $\varnothing 5.0$ X 10mm (D1/D2 bone)



In soft(D4) bone or in condition of getting initial fixation at implant apex, $\varnothing 4.0$ twist drill is the final drill

History of Neobiotech

Apr. 2018	IT-III active
Mar. 2018	EZ Fixing Spacer
Mar. 2017	Ridge Wider Kit
Feb. 2017	T-brush
Sep.2016	IS-III active
Jul. 2016	EZ GBR System
May 2015	Encoded Healing abutment
Apr. 2015	CAMeleon cs
May 2014	World Class 300
Dec. 2013	Manufactured CAMEleon
Nov. 2013	EB-II active
Oct. 2013	SinusAll Kit PickCap Impression Kit
Jun. 2013	IT-II active
Oct. 2012	Prosthetic Kit / Accessory Kit
Jun. 2012	Neoguide system
Mar. 2012	GBR Kit
Oct. 2011	IS-II active, Quicktight
Jun. 2011	IS-II, S-mini & ACM
Oct. 2010	CTi - mem
Feb. 2010	SR Kit
Jun. 2009	FR Kit
Mar. 2009	Wide Implant
Nov. 2008	CMI IS implant
Jul. 2008	SLA-Kit
Mar. 2008	SCA-Kit
Mar. 2008	Obtain the patent of CMI Implant
Sep. 2007	Merged with "Osscare.Co.Ltd"
Jun. 2007	CMI implant(External Type)
Feb. 2007	Change of Management
Jul. 2000	Foundation of "Neobiotech.Co,Ltd,."



Neobiotech Co.,Ltd

10F, 36, Digitalro-27Gil, Guro-Gu, Seoul, Korea, 08381

Tel 82-2-582-2885, Fax 82-2-582-2883 www.neobiotech.com / Made in Korea